

Public Rights of Way (PROW)



What are we responsible for?

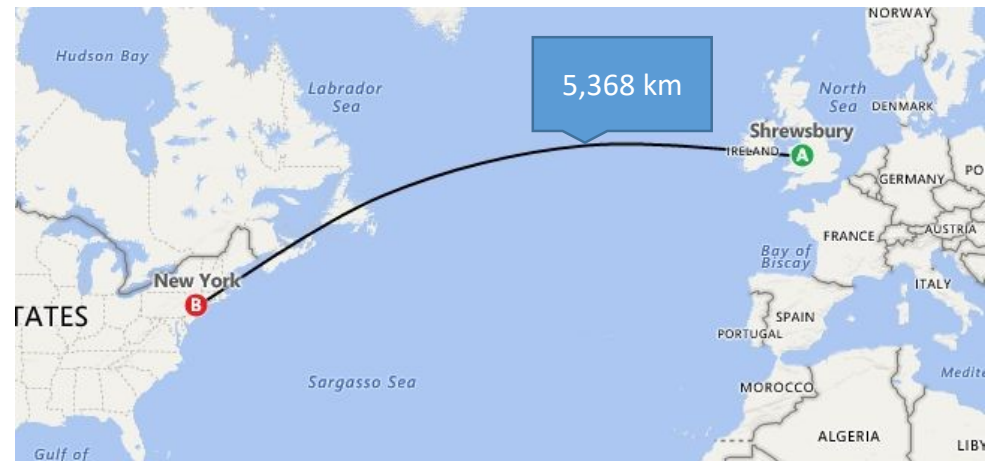
- Duty to assert & Protect
- Duty to keep the Definitive Map up to date
- Maintenance of the PROW (surfaces in the main)
- Bridges
- Enforcement of the network
- Furniture provision
- Legal Orders
- Planning and PROW
- Searches



The existing network

Shropshire has

- A Public Rights of Way network of over 5,600km.
- Is the third largest network of Public Rights of Way in England.
- Is the largest landlocked area.



Bridges & Surfaces on PROW



Bridges & Surfaces on PROW



Bridges & Surfaces on PROW



Bridges & Surfaces on PROW



Bridges & Surfaces on PROW



Bridges & Surfaces on PROW



Bridges & Surfaces on PROW



Bridges & Surfaces on PROW



Bridges & Surfaces on PROW



Bridges & Surfaces on PROW



Bridges & Surfaces on PROW



Bridges & Surfaces on PROW



Bridges & Surfaces on PROW



Bridges & Surfaces on PROW



Bridges & Surfaces on PROW



Bridges & Surfaces on PROW



Bridges & Surfaces on PROW



Bridges & Surfaces on PROW



Bridges & Surfaces on PROW



Bridges & Surfaces on PROW



Contracting Examples



Contracting Examples



Contracting Examples



Contracting Examples



Staffing Pressures

- Mapping and Enforcement Team
- Wild Team
- Walking for Health
- Contracting

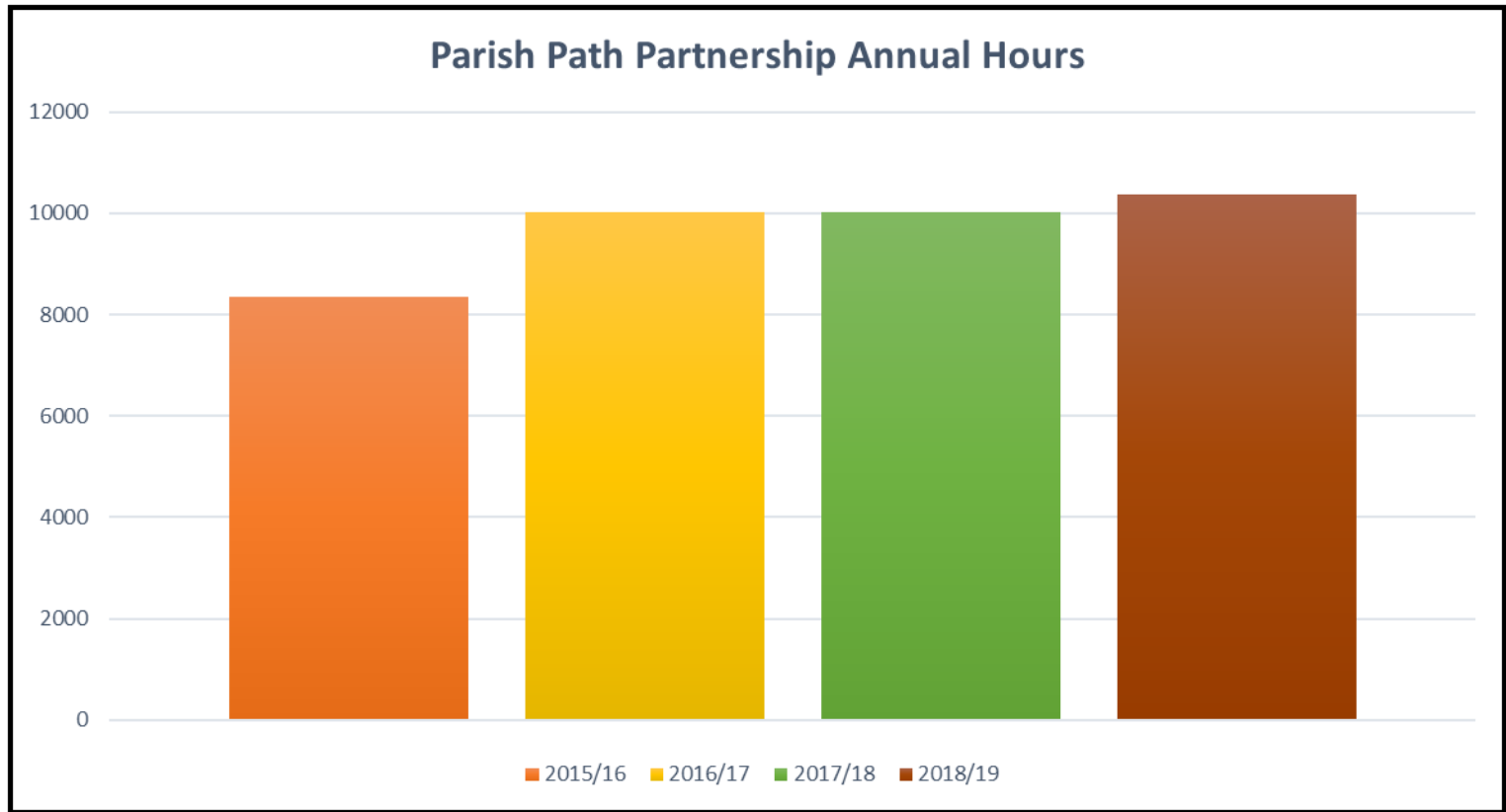
Looking at staffing model to ensure that we:

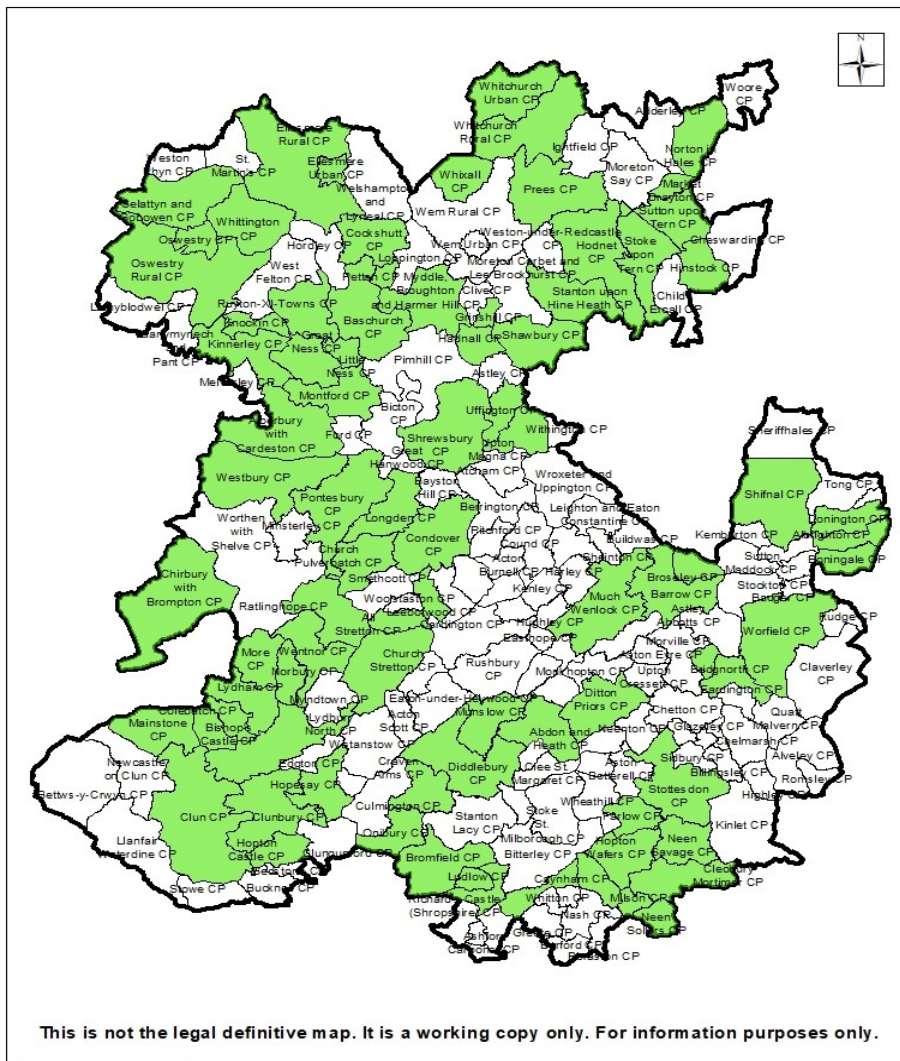
- Fulfil our statutory duty
- Add Value – links to social prescribing/resilient communities
- Commercialism

Parish Paths Partnership

- The Council has worked with the Parish Paths Partnership (P3) scheme for 25 years.
- 54 active groups across the County covering 84 Parishes
- P3 hours contributing over 10,000 hours per year since 2016/17
- In the last 4 years there has been a 24% increase in P3 hours
- 2018/19 P3 hours contributed the equivalent of £77,672 contractor cost

Parish Paths Partnership





Stile needed replacement in Marton



Stile replaced with a gate providing easier access



Oswestry P3 - Gate installation at High Fawr



Wentnor Birchope Step Installation

Before



During





After

Ellesmere Rural Stile Replacement

Before



After



Other examples

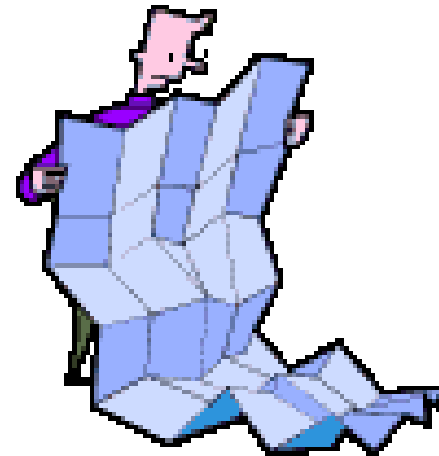
Cockshutt Bridge and gate installation



Hadnall Group undertaking Clearance



Any Questions?



Contact:

Shona Butter

Rights of Way Mapping & Enforcement Manager
Outdoor Partnerships Team

E-mail shona.butter@shropshire.gov.uk

Tel: 01743 255062

Richard Knight

Countryside Maintenance Manager
Outdoor Partnerships Team

E-mail richard.knight@Shropshire.gov.uk

Tel: 01743 791984